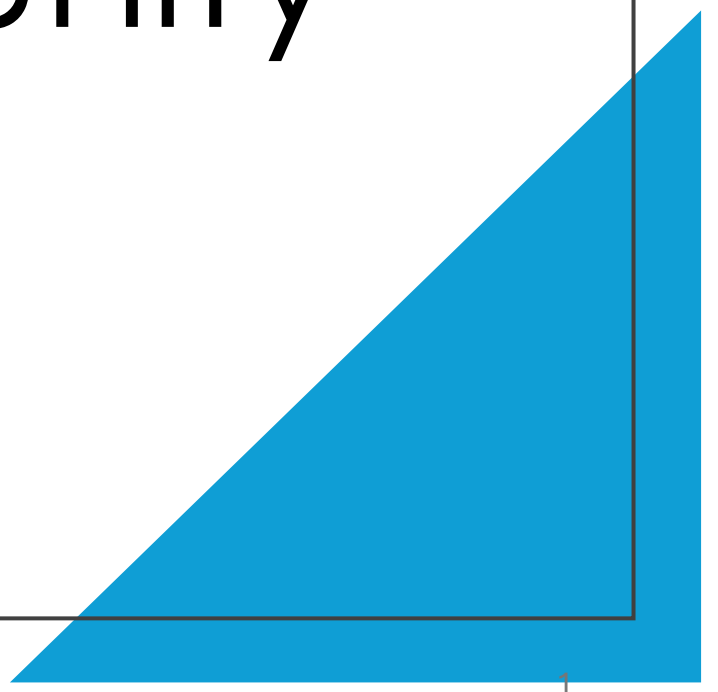


Glendale Community Meeting

May 6, 2026



While we wait to start the meeting, please take an online poll

- Answer the questions by scanning the QR code below with your phone.
- It is an opportunity to provide anonymous feedback to us.
- Results will be utilized to refine the plans for improvements.



We want to know more about your household and what is important to you!

1. Have you attended a previous Open House?
 - Yes or no
2. How long have you lived in the Glendale community?
 - Less than 1 year, 2-5 years, 6-9 years, More than 10
1. How many people live in your household?
2. How many children under the age of 10 are in your family?
3. Where at Glendale do your kids play?
 - Back yard, Park, Neighbor's House, Other place
6. Rate the importance of having one level living. I.e. No stairs in your home.
 - Strongly agree, Agree, No Preference, Disagree, Strongly Disagree
7. For storage solutions, what is your most urgent need?
 - Clothing, Food, Household items, Other.
8. How often do you have need for a large space to host family and friend gatherings?
 - Once a week, Once a month, Once a year, Other
9. Use one word to describe what you love about Glendale.



Today's Meeting Agenda

- Welcome & Introductions
- Review Poll Results
- What Has Happened
- What We've Heard From Residents
- Where We Are Going
- Passport: Round Table Talks on Approaches/Site Options, Amenities, Landscaping Options, and Building Types
- Next Steps

Meeting Ground Rules

We want to hear from you today. To ensure that we can have everyone participate we will follow these rules:

- Act in a respectful way.
- Everyone behaves in a manner that:
 - *Does not* disrupt the orderly conduct of the meeting
 - *Does not* interfere with the ability of others to observe or participate
 - *Does not* create fear or intimidation
- Participants wait to speak until they are called on.
- To give everyone a chance to speak, we may ask you to finish your comment within 3 minutes.

Poll Results

What Has Happened

- **No approach has been selected** – we are still exploring options with you:
 - Rehab of existing townhomes + adding rear additions
 - Rehab of existing townhomes + adding rear additions + new units
 - All new construction
- MPHA has hired a design and construction team to further explore what may be possible at Glendale.
- MPHA has developed and shared criteria we are considering when evaluating approaches; many reflect resident priorities
- We continue to seek input from residents to inform potential approaches

What We've Heard From Residents

- **Relocation remains a concern & question**
- Alignment on larger kitchens & additional bathrooms
- Noise transfer between units is a concern
- Front doors: convenient access to unit/outdoors; allows greater visibility
- Interest in single-level & accessible living options
- Parking remains a concern; any new units requires more
- Some concerns with elevator buildings/visibility to children in larger buildings
- Potential of community (and more) amenities is appealing

Where We Are Going

- Resident feedback obtained tonight and throughout May will be considered by MPHA with the selection of a preferred approach to improvements at Glendale, to be announced at the June 17 community meeting.
- This summer, MPHA and its design and construction team will begin to develop detailed designs and plans for construction. This will include phasing plans and approaches to relocation.
- MPHA will work with residents to develop a relocation contract that includes MPHA commitments and resident rights.
- MPHA will continue to seek your input on design details.
- MPHA will provide information of HUD's RAD/Section 18 Program.
- The soonest any construction would start is summer/fall 2027, depending on funding availability.

Passport to Provide Feedback!

- You received a “passport” when you checked in tonight.
- For each of the five round tables, you will receive a stamp on your passport.
- Turn in your stamped passport as you leave and you will be entered in a drawing for an opportunity to win a prize!
- We will spend 10 minutes at each table and then staff will move to the next table.
- We have a sixth, optional table called “Historic Preservation” that is staffed by MPHA’s historic consultant, Tamara Halvorsen. She is available to answer questions you may have on Glendale’s potential historic designation.

Visit Each of the Roundtables

TABLE 1

SITE OPTIONS 1 & 2 (REHABILITATION WITH ADDITIONS)
IKHTIYAARADA 1 & 2 (DAYACTIR IYO KU DARIS)



TABLE 2

SITE OPTIONS 3 & 4 (ALL NEW CONSTRUCTION)
IKHTIYAARADA 3 & 4 (DHISMAHA CUSUB OO DHAN)

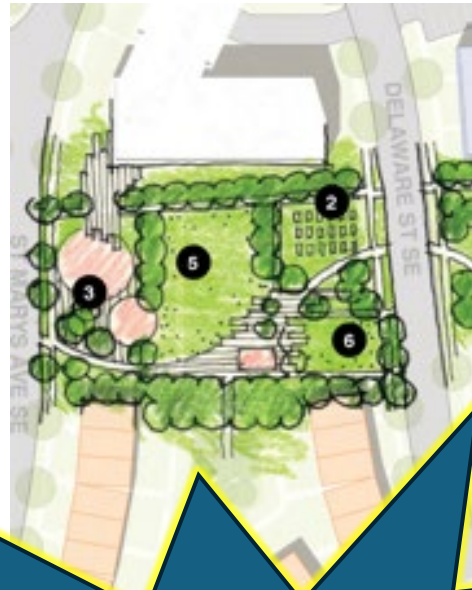


TABLE 3

LANDSCAPE OPTIONS
IKHTIYAARADA ASTAAMAHA DIBADDA



TABLE 4

NEW CONSTRUCTION BUILDING & UNIT TYPES
DHISMAHA CUSUB NOOCYADA DHISMAYAASHA
IYO CUTUBYADA

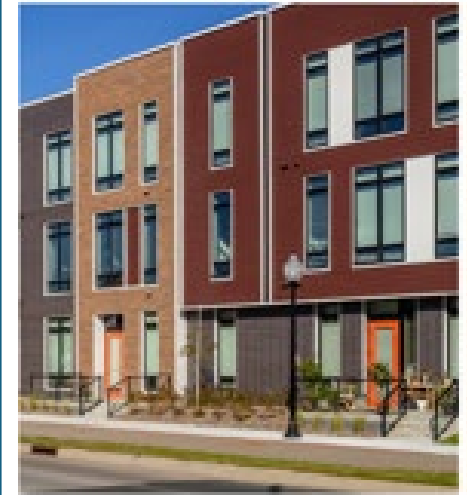


TABLE 5

TOWNHOMES
GURYO GOONI OO HADANE ISKU DHEGAN



Staff will guide 10-minute-long discussions at the tables, then they will switch to the next table. Tell us what you like, dislike, and what's missing!

Next Steps

- Your feedback tonight will influence the selected project approach for improvements at Glendale that we'll share at our June 17 Meeting.
- Resident Advisory Group and House Calls/Office Hours
 - If you're interested in participating in the Advisory Group or more house calls with MPHA and the design team, please let Kayse know. We will also be hosting office hours again – notices will be provided!
- After you provide feedback, turn in your passport as you leave, for an opportunity to win a prize!

THANK
YOU!